


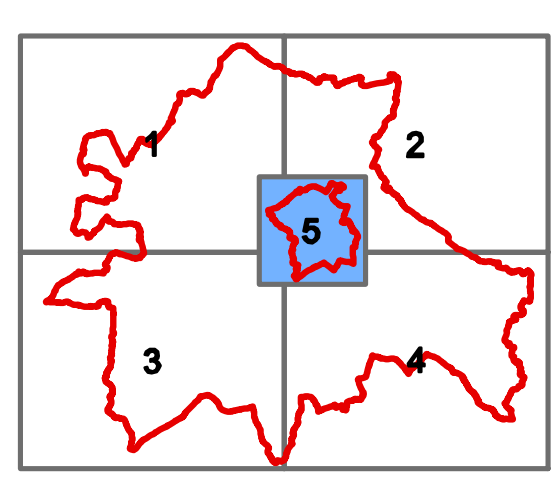



KEY

-  South Cambridgeshire DC & Cambridge City Council Boundaries
-  Fenstanton and Fen Drayton
-  Old West Flood Defence
-  River Cam from Cambridge to Upware
-  River Cam from Gt Chesterford to Hauxton
-  River Granta from Linton to Stapleford

TITLE:
SOUTH CAMBRIDGESHIRE DC
AND CAMBRIDGE CITY COUNCIL
LEVEL 1 SFRA

FIGURE No:
FLOOD WARNING AREAS
1402 - C - 4.5

Reproduced from Ordnance Survey data by permission of the Controller of Her Majesty's Stationary Office. © Crown copyright (2008). All rights reserved. License No. 0100022500. © 2008 NAVTEC